

USB 2.0 DISPLAY ADAPTER

USER MANUAL

CONTENTS

INTRODUCTION	3
FEATURES	3
SYSTEM REQUIREMENTS	3
NOTES	3
PACKAGE CONTENTS	4
SUPPORTED COMMON DISPLAY RESOLUTION	4
TECHNICAL SPECIFICATIONS	5
QUICK INSTALLATION GUIDE	5
INSTALLATION ON WINDOWS 10 (NETWORK CONNECTION)	7
DEVICE DRIVER INSTALLATION	7
VERIFYING DEVICE DRIVER INSTALLATION	8
DEVICE DRIVER UN-INSTALLATION	9
INSTALLATION ON WINDOWS 10 (NO NETWORK CONNECTION)	10
DEVICE DRIVER INSTALLATION	10
VERIFYING DEVICE DRIVER INSTALLATION	13
DEVICE DRIVER UN-INSTALLATION	14
INSTALLATION ON WINDOWS 7/ 8/ 8.1	15
DEVICE DRIVER INSTALLATION	15
VERIFYING DEVICE DRIVER INSTALLATION (WINDOWS 8.1)	18
DEVICE DRIVER UN-INSTALLATION	19
FUNCTION DESCRIPTION	20
ACCESS USB DISPLAY UTILITY (WINDOWS 7/ 8/ 8.1 ONLY)	20
Q&A	24
TROUBLESHOOTING TIPS	25
REGULATORY COMPLIANCE	27

INTRODUCTION

Thank you for purchased the USB 2.0 DISPLAY ADAPTER. The USB 2.0 Display Adapter works as an external video card which allow adding an additional display instantly without hassle of open the computer chassis to install the internal graphics card. The connected display can act as mirrored or extended desktop of the main display on your computer. It provides low latency connection, simply “Plug-n-Play” between your computer and 2nd display device, you will be able to create a new visual environment in a few seconds.

FEATURES

- ◆ USB 2.0 specification compliant
- ◆ Plug-and-Play USB connectivity after software installed
- ◆ Support Multi-display extension of one computer system
- ◆ USB bus-powered

SYSTEM REQUIREMENTS

- ◆ Available USB 2.0 port
- ◆ Minimum requirement to use one (1) USB Displays (office application):
 - CPU: Intel single Core 1.2 GHz / RAM: 512MB memory or higher
- ◆ 2~3 Displays (office application):
 - CPU: i3 Quad Core 2.8GHz / RAM: 2GB memory or higher
- ◆ 4~6 Displays (office application):
 - CPU: i5 Quad Core 4.0GHz / RAM: 8GB memory or higher
- ◆ Windows 10/ Windows 8.1/ Windows 7/ Windows XP (32 or 64 bit)




NOTES

- ◆ It can be online update and auto-installing the driver on Windows 7/8.1/10.
- ◆ Do not recommend to connect USB 2.0 DISPLAY ADAPTER via the external USB Hub.
- ◆ System reboot is required for the driver installation
- ◆ Suggests USB 2.0 for “Office Application” only.
- ◆ Video playback is not recommended due to USB 2.0 bandwidth limitation causing imperfect video performance.

PACKAGE CONTENTS

- ◆ USB 2.0 DISPLAY ADAPTER * 1
- ◆ Driver / Manual CD * 1
- ◆ Quick Installation Guide * 1

SUPPORTED COMMON DISPLAY RESOLUTION

Model Number		UV-A8301	UD-A8302	UVGA-A8211
Product Picture				
Connector		D-sub 15pin (female)	DVI-I (female)	D-sub 15pin (female)
Operating System		Windows / MAC	Windows / MAC	Windows
Aspect Ratio	Resolution	Resolution up to 1920*1200 / 1920*1080	Resolution up to 1920*1200 / 1920*1080	Resolution up to 1600*1200 / 1680*1050
Wide Screen Display				
16:10		1920 x 1200		x
16:9		1920 x 1080		x
16:10		1680 x 1050		
16:9		1600 x 900		
16:10		1440 x 900		
16:9		1360 x 768		
16:10		1280 x 800		
15:9		1280 x 768		
16:9		1280 x 720		
Standard Display				
4:3		1600 x 1200		
4:3		1400 x 1050		
5:4		1280 x 1024		
4:3		1280 x 960		
4:3		1152 x 864		
4:3		1024 x 768		
4:3		800 x 600		

TECHNICAL SPECIFICATIONS

Host Interface	USB 2.0 A type connector
Video Output Connector	DB- 15pin (female) – Model: USB 2.0 - VGA DVI-I (female) – Model: USB 2.0 - DVI
Case Material	ABS
Power Source	Bus Powered
Regulatory Compliances	CE, FCC, VCCI and RCM RoHS compliant

QUICK INSTALLATION GUIDE

Follow these steps to quickly install your new USB 2.0 DISPLAY ADAPTER.


Step 1

Connect the display device (monitor/projector) to the VGA/DVI connector of USB 2.0 DISPLAY ADAPTER and turn on the display device.

Step 2

Plug in the USB 2.0 DISPLAY ADAPTER to the USB port of your computer (host PC).

When Windows 7/ 8.1 with an active network connection

- It will launch the driver installation wizard automatically. Please follow the instructions to install the device driver.
- After system reboot, the extended display will be shown on the attached display device (monitor/projector) and an icon  “USB Display (Trigger) Utility” appears at the taskbar. The USB 2.0 DISPLAY ADAPTER is ready to use now.

✂ *If the USB Display Adapter could not be recognized, please click on the link below (the support page at www.mct.com.tw) to download the latest driver version to your Desktop or Downloads folder. The software will be in a .zip folder. Extract the zip folder before installing the driver.*


<http://www.mct.com.tw/index.php? Page=support&id=18&mode=show& lang=E>

When Windows 10 with an active network connection

- The setup process can be done online via the driver’s auto-installer, and will recognize the USB 2.0 DISPLAY ADAPTER automatically. The USB 2.0 DISPLAY ADAPTER is ready to use now.

- The icon “USB Display (Trigger) Utility” **will not** be present on Windows 10.
- ✘ *If the USB Display Adapter could not be recognized, please go to “Settings” → “Update & security” → “Update status” and click on “Windows update”. Windows Update will install the latest driver on your system.*

When there is no network connection or Windows XP

- Please make sure the USB 2.0 DISPLAY ADAPTER is **unplugged** from your PC or Notebook before executing the setup program.
- Insert the Driver/Manual CD into CD-ROM drive; the setup program should be launched automatically. Or, double click “D:\Setup.exe (where D: is the path of your CD-ROM drive) and follow the instructions to install the device driver.
- After reboot, please plug-in USB 2.0 DISPLAY ADAPTER to the USB port of your computer (host PC), the device driver will be configured automatically.
- After the driver is configured completely, the extended display will be shown on the attached display device (monitor/projector) and an icon  “USB Display (Trigger) Utility” appears at the taskbar on Windows 7/ 8/ 8.1, but not on Windows 10.

Windows XP user: Please reboot the computer to make sure the USB Display Adapters work correctly.

Multi-Display Setup

- Connect the display devices (monitor/projector) to VGA/DVI connector of USB 2.0 DISPLAY ADAPTERs and turn on the display devices.
 - Please plug in the additional USB 2.0 DISPLAY ADAPTER (connected with the display device already) to an available USB port of your computer (host PC), the device driver will be configured automatically. After the driver is configured completely, the USB extended display will be shown on the attached display device.
 - Repeat this step for each additional USB 2.0 DISPLAY ADAPTERs you want to install.
- ✘ *The screen may flash or go black during installation. It is part of the normal process.*

INSTALLATION ON WINDOWS 10 (NETWORK CONNECTION)

DEVICE DRIVER INSTALLATION

Installing the device driver enables your computer's operating system to recognize the **USB 2.0 DISPLAY ADAPTER** once it's connected. Please check your operating system and refer to the appropriate installation procedure to begin installing the device driver.

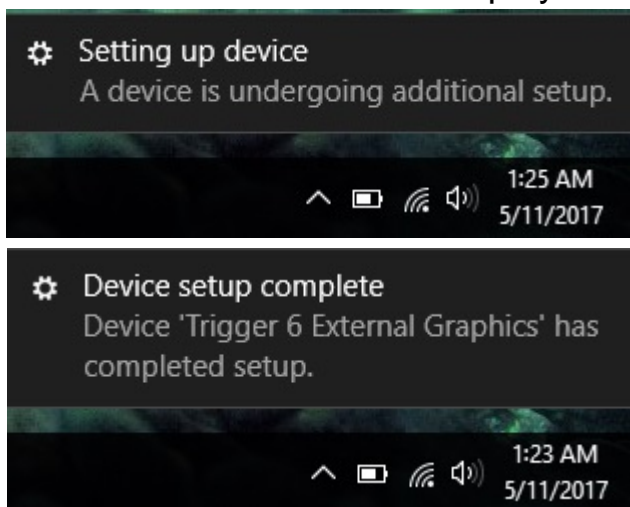
This section illustrates the simple device driver installation procedure for computer running **Windows 10** (version 1703) operating system.

Step 1

Connect the display device (monitor/projector) to the VGA/DVI/HDMI connector of USB 2.0 DISPLAY ADAPTER and turn on the display device.


Step 2

Plug in the USB 2.0 DISPLAY ADAPTER to the USB port of your computer (host PC). It detects and installs the driver automatically. And the extended display will be shown on the attached display device. It is ready to use.

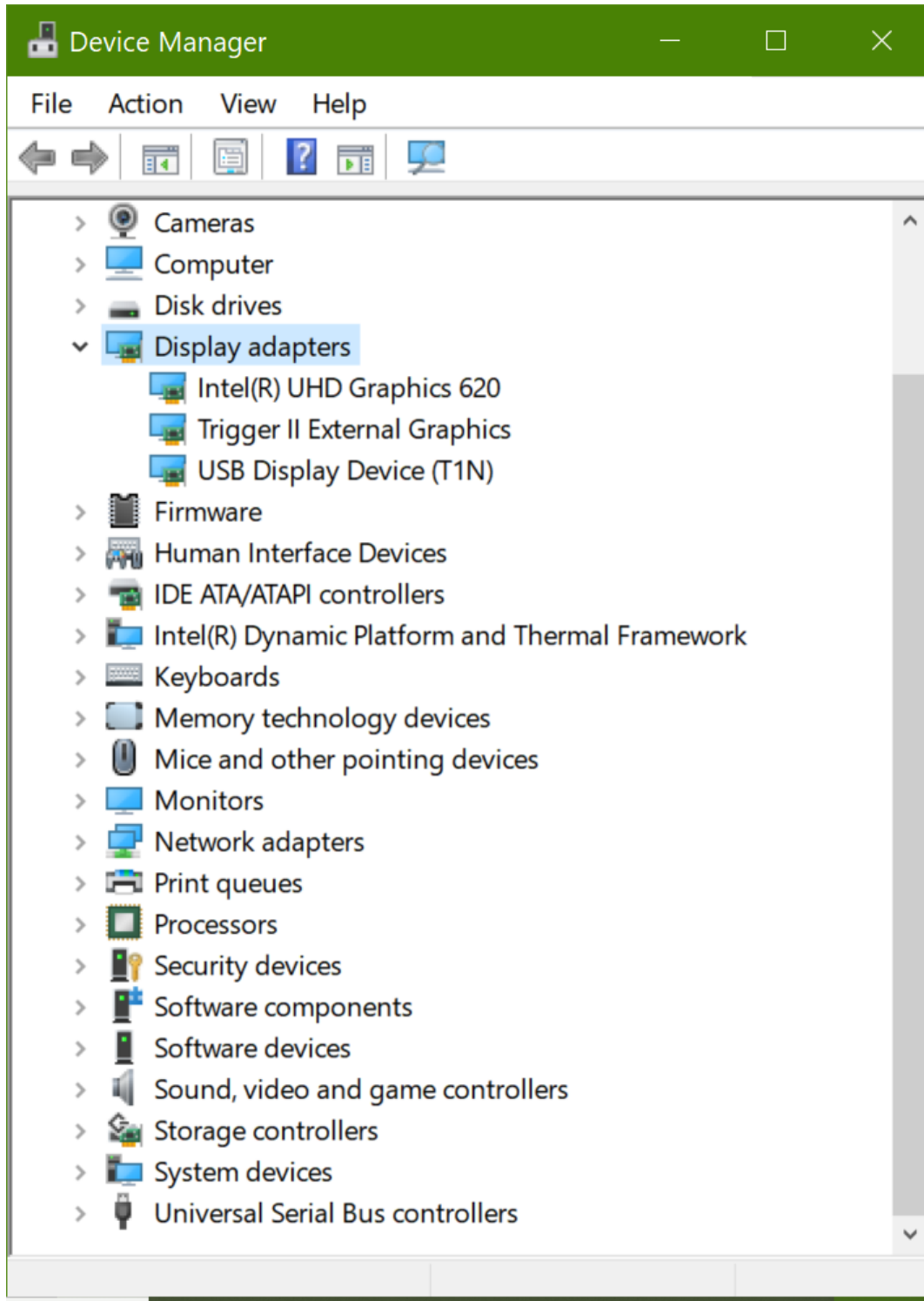


- *Unplug and plug the USB 2.0 DISPLAY ADAPTER again if the extended display does not show on the attached display device (monitor/projector).*


VERIFYING DEVICE DRIVER INSTALLATION

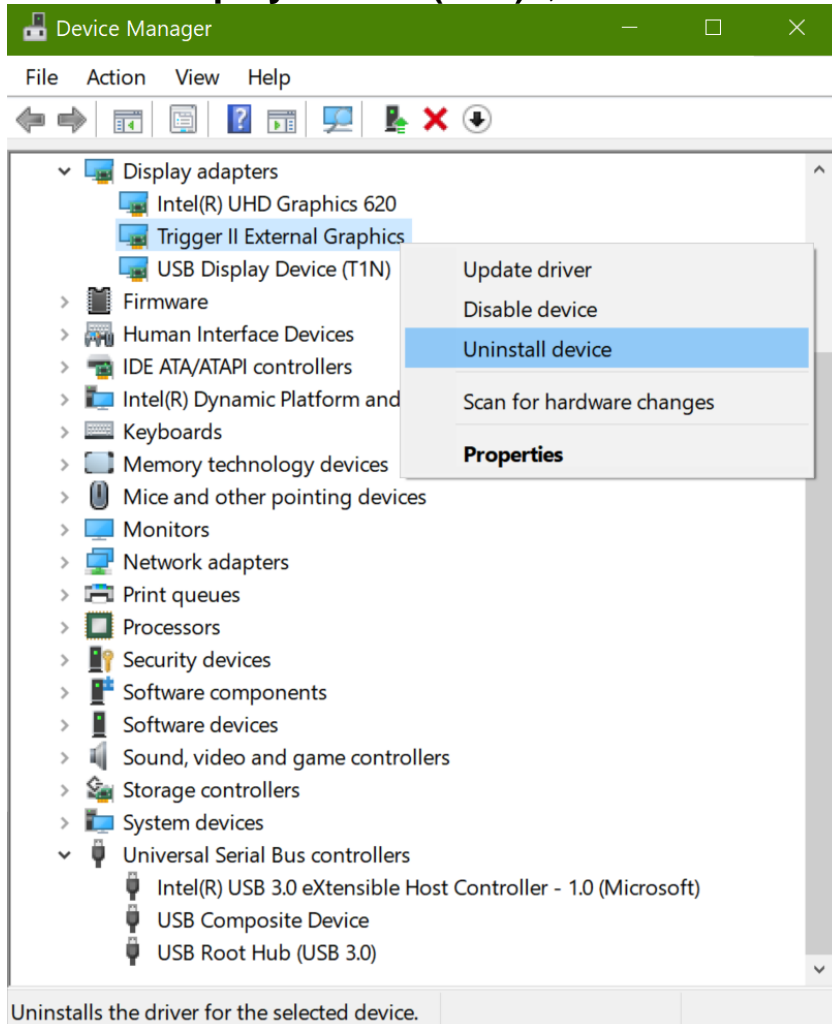
Make sure the USB 2.0 DISPLAY ADAPTER has connected with PC. Then click “Start ” at the taskbar and key in “Device Manager” to search it.

Double click “**Display adapters**” to begin verification by make sure highlighted devices were added to the system.

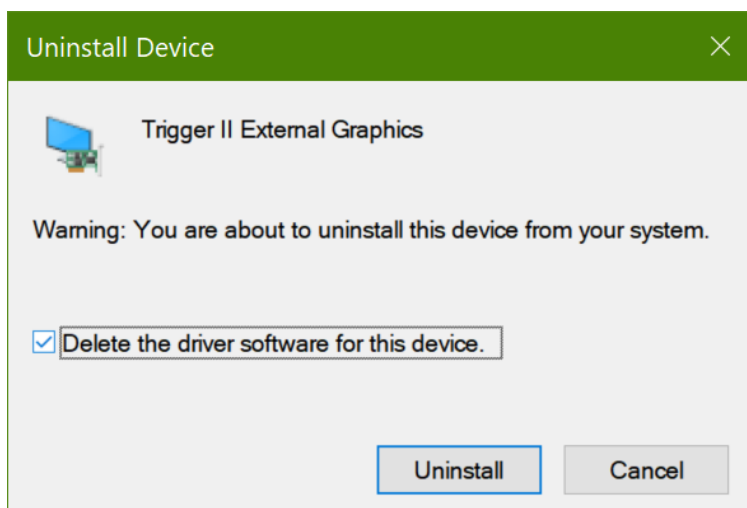


DEVICE DRIVER UN-INSTALLATION

1. Make sure the USB 2.0 DISPLAY ADAPTER has connected with PC. Then click “Start ” at the taskbar and key in “**Device Manager**” to search it.
2. Double click “**Display adapters**”, right click “**Trigger II External Graphics**” or “**USB Display Device (T1N)**”, and select “**Uninstall**”.



3. Select “Delete the driver software for this device”, and click “OK” to uninstall the device from your system.



INSTALLATION ON WINDOWS 10 (NO NETWORK CONNECTION)

DEVICE DRIVER INSTALLATION

Installing the device driver enables your computer's operating system to recognize the **USB 2.0 DISPLAY ADAPTER** once it's connected. Please check your operating system and refer to the appropriate installation procedure to begin installing the device driver.

This section illustrates the simple device driver installation procedure for computer running **Windows 10** (version 1703) operating system.

Step 1

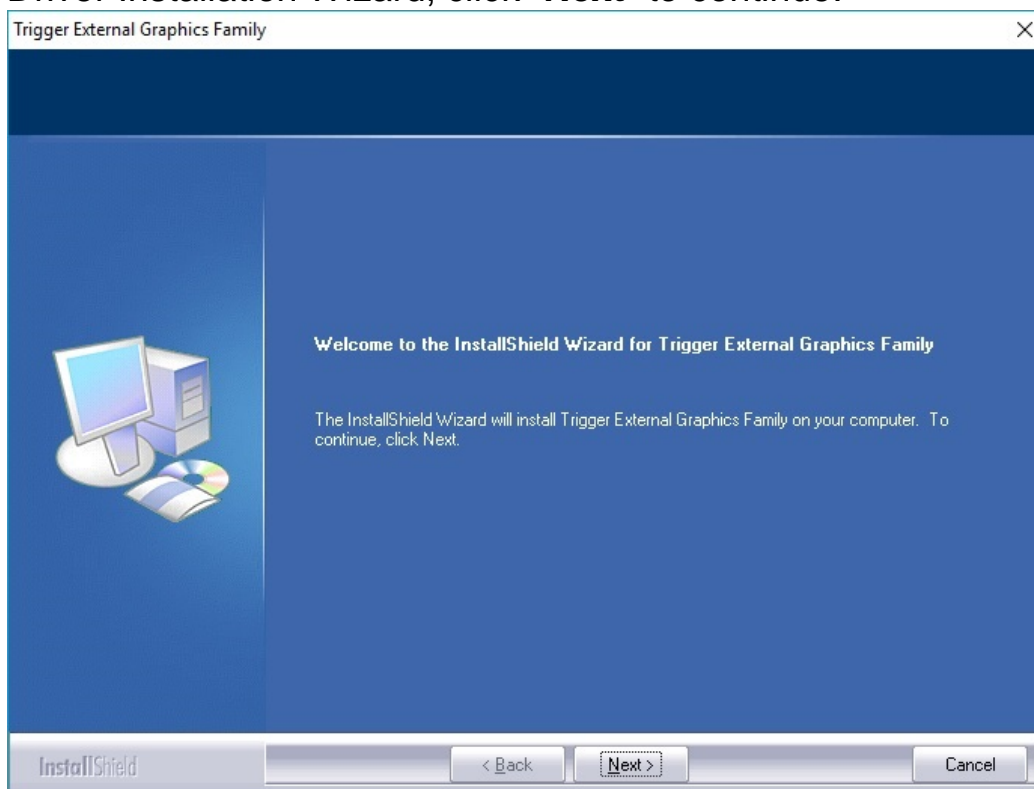
Please make sure the USB 2.0 DISPLAY ADAPTER is unplugged from your PC or Notebook before executing the setup program.

Step 2

Insert the Driver CD into the CD-ROM drive; the setup program should be launched automatically. If setup program does not begin automatically, click Start, Run and double click "**D:\Setup.exe**" (where D: is the path of your CD-ROM drive).

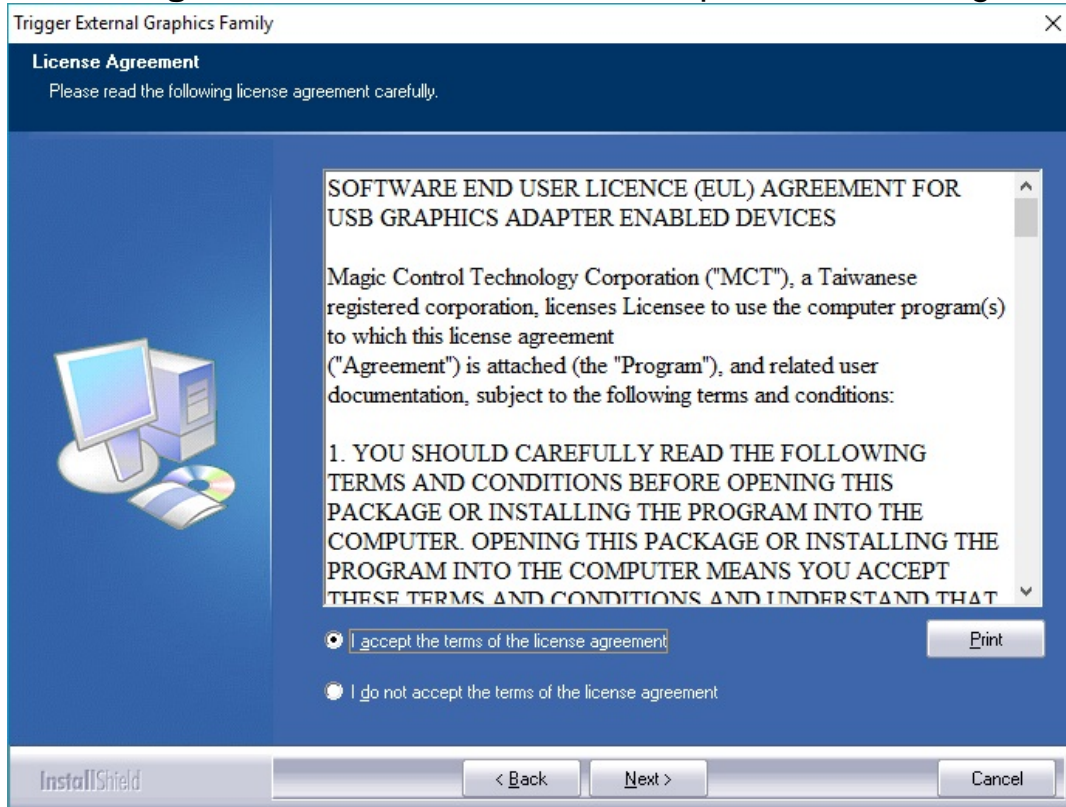
Step 3

Driver Installation Wizard, click "**Next**" to continue.



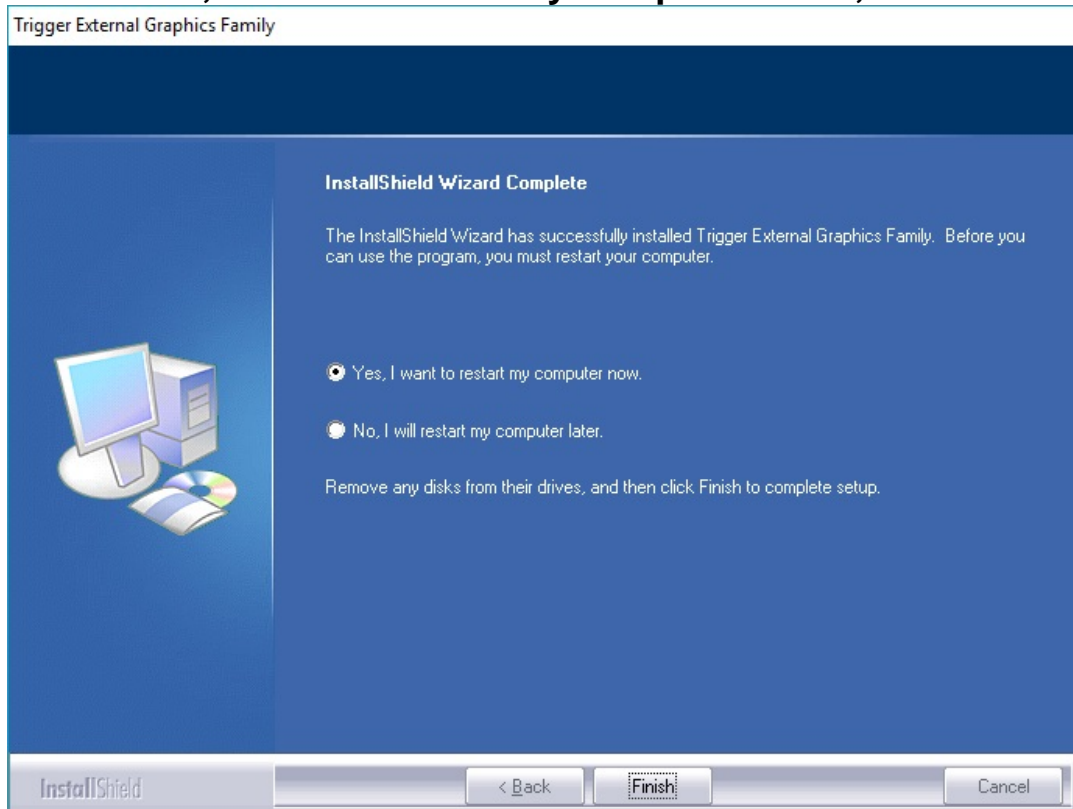
Step 3

License Agreement; please review it and check **“I accept the terms of the license agreement.”** Click **“Next”** to accept the License Agreement.



Step 4

Select **“Yes, I want to restart my computer now”**, and click **“Finish”** to reboot.



Step 5

After reboot, please connect the external display device (monitor/projector) to the VGA/DVI connector of **USB 2.0 DISPLAY ADAPTER** and turn on this external display device (monitor/projector).

Then plug the **USB 2.0 DISPLAY ADAPTER** into an available USB port of your PC. The device driver software setup will begin automatically. The extended display will be shown on the attached display device. It is ready to use.

※ Installation of multiple USB 2.0 DISPLAY ADAPTERs


Please plug in the additional USB 2.0 DISPLAY ADAPTER (connected with the external display device already) to an available USB port of your computer (host PC), the device driver will be configured automatically. After the driver is configured completely, the USB extended display will be shown on the attached display device.

Repeat this step for each additional USB 2.0 DISPLAY ADAPTERs you want to install. All USB Display devices are now installed completely and ready to use.

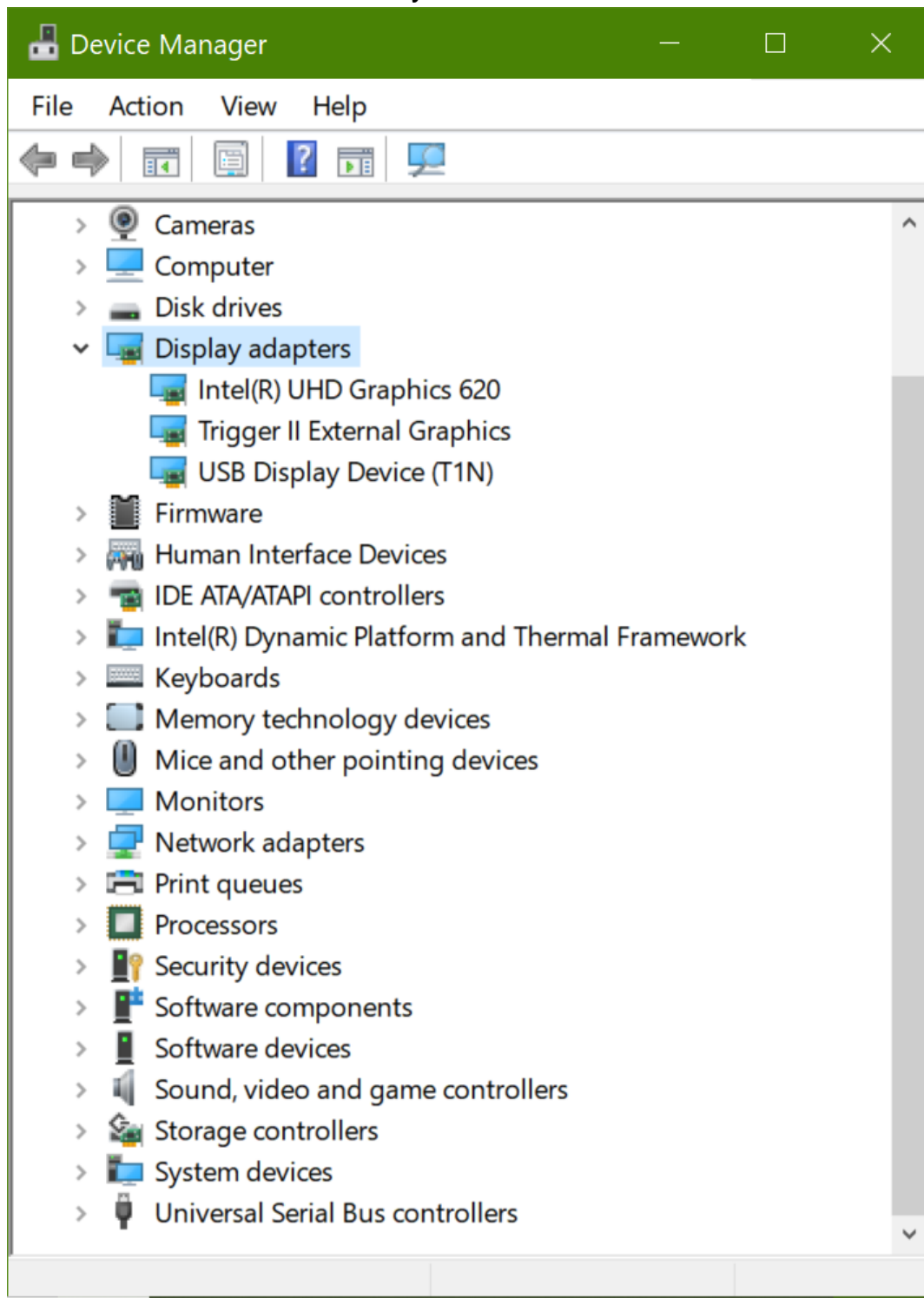
※The screen may flash or go black during installation. It is part of the normal process

VERIFYING DEVICE DRIVER INSTALLATION


The following procedure allows you to verify the device driver installation.


Make sure the USB 2.0 DISPLAY ADAPTER has connected with PC. Then click “Start ” at the taskbar and key in “Device Manager” to search it.

Double click “**Display adapters**” to begin verification by make sure highlighted devices were added to the system.



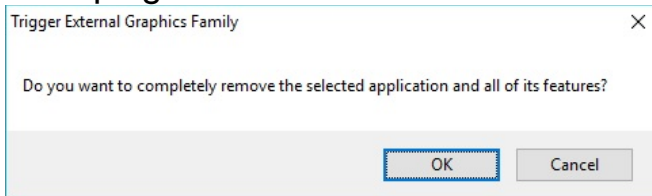
DEVICE DRIVER UN-INSTALLATION

1. Click “Start 

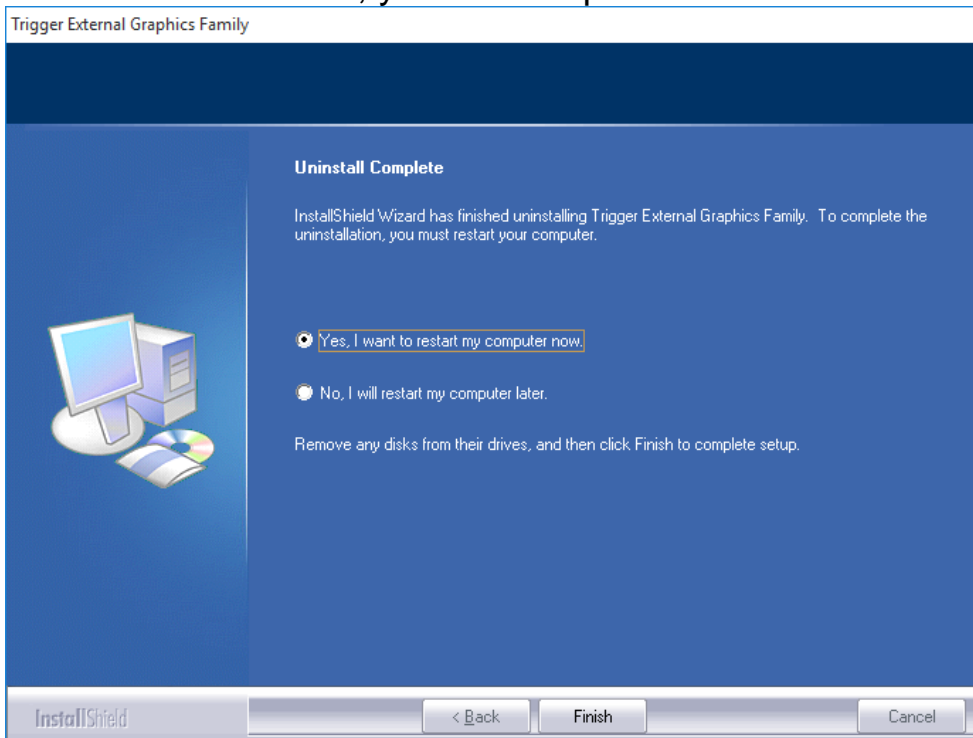
Select “

Name	Publisher	Installed On	Size	Version
Google Chrome	Google Inc.	8/22/2016	343 MB	57.0.2987.133
Microsoft Office Professional Plus 2016 - en-us	Microsoft Corporation	5/9/2017	1.23 GB	16.0.7967.2139
Microsoft OneDrive	Microsoft Corporation	5/9/2017	84.8 MB	17.3.4816.0313
Microsoft Visual C++ 2013 Redistributable (x64) - 12.0...	Microsoft Corporation	5/9/2017	20.5 MB	12.0.30951.0
Microsoft Visual C++ 2013 Redistributable (x86) - 12.0...	Microsoft Corporation	5/9/2017	17.1 MB	12.0.30951.0
NVIDIA 3D Vision Driver 376.54	NVIDIA Corporation	2/14/2017	30.6 MB	376.54
NVIDIA Graphics Driver 376.54	NVIDIA Corporation	2/14/2017	601 MB	376.54
NVIDIA HD Audio Driver 1.3.34.17	NVIDIA Corporation	2/14/2017	9.32 MB	1.3.34.17
NVIDIA PhysX System Software 9.16.0318	NVIDIA Corporation	8/23/2016	406 MB	9.16.0318
Trigger External Graphics Family 17.01.0413.0179	MCT Corp	5/10/2017	17.01.0413.0179	
U232 P9/P25 13.2.98	MCT	11/9/2016	2.27 MB	13.2.98
USB Ethernet Adapter 15.01.0909.0194	MCT Corp	10/17/2016	48.8 MB	15.01.0909.0194
VLC media player	VideoLAN	5/9/2017	123 MB	2.2.4
Vulkan Run Time Libraries 1.0.11.1	LunarG, Inc.	5/9/2017	1.66 MB	1.0.11.1
Vulkan Run Time Libraries 1.0.26.0	LunarG, Inc.	5/9/2017	1.66 MB	1.0.26.0
Windows 10 Upgrade Assistant	Microsoft Corporation	5/9/2017	5.00 MB	1.4.9200.17384

2. Unplug the **USB 2.0 DISPLAY ADAPTER** and click “OK” to continue.



3. Select “Yes, I want to restart my computer now” and click “Finish” to reboot. After reboot, you will complete the driver un-installation.



INSTALLATION ON WINDOWS 7/ 8/ 8.1

DEVICE DRIVER INSTALLATION

Installing the device driver enables your computer's operating system to recognize the **USB 2.0 DISPLAY ADAPTER** once it's connected. Please check your operating system and refer to the appropriate installation procedure to begin installing the device driver.

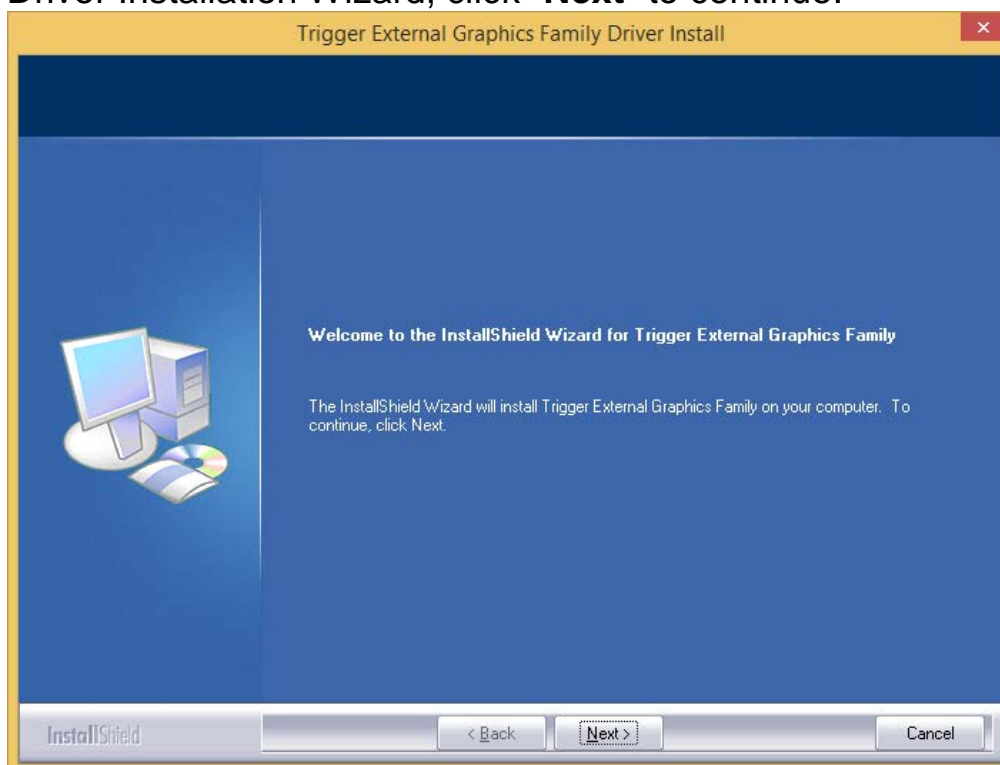
This section illustrates the simple device driver installation procedure for computer running **Windows 8.1** operating system. Please make sure the **USB 2.0 DISPLAY ADAPTER** is **unplugged** from your PC or Notebook before executing the setup program.

Step 1.

Insert the Driver CD into the CD-ROM drive; the setup program should be launched automatically. If setup program does not begin automatically, click Start, Run and double click "**D:\Setup.exe**" (where D: is the path of your CD-ROM drive).

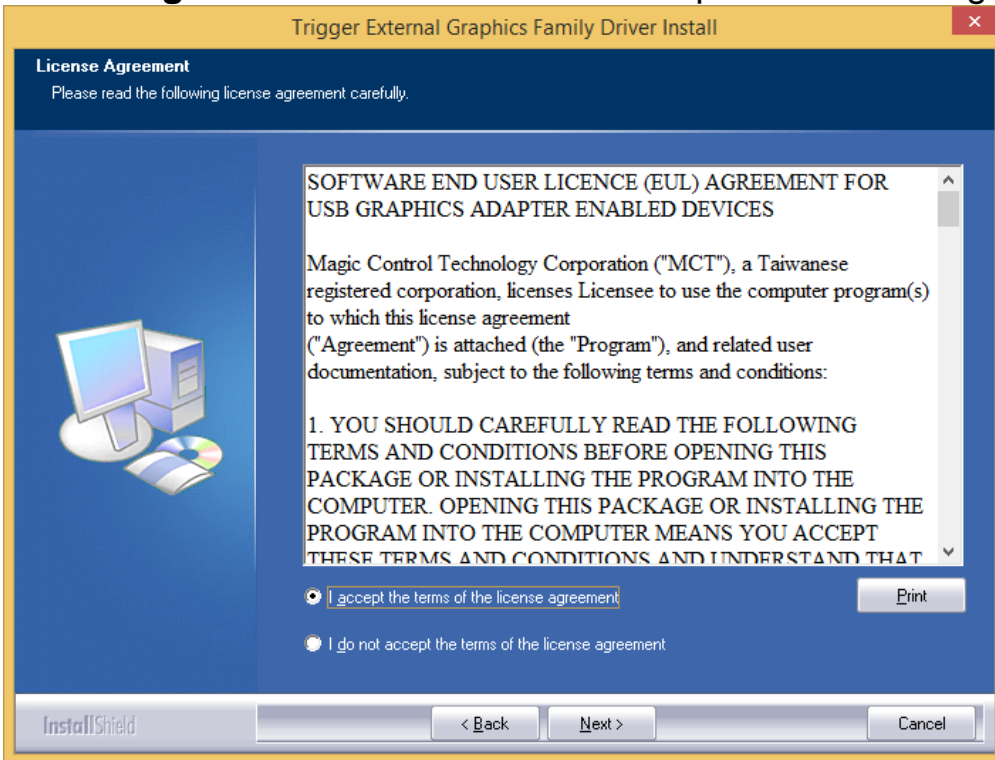
Step 2.

Driver Installation Wizard, click "**Next**" to continue.



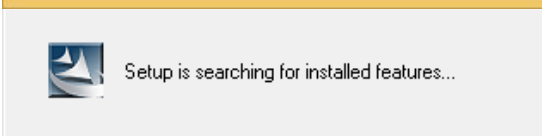
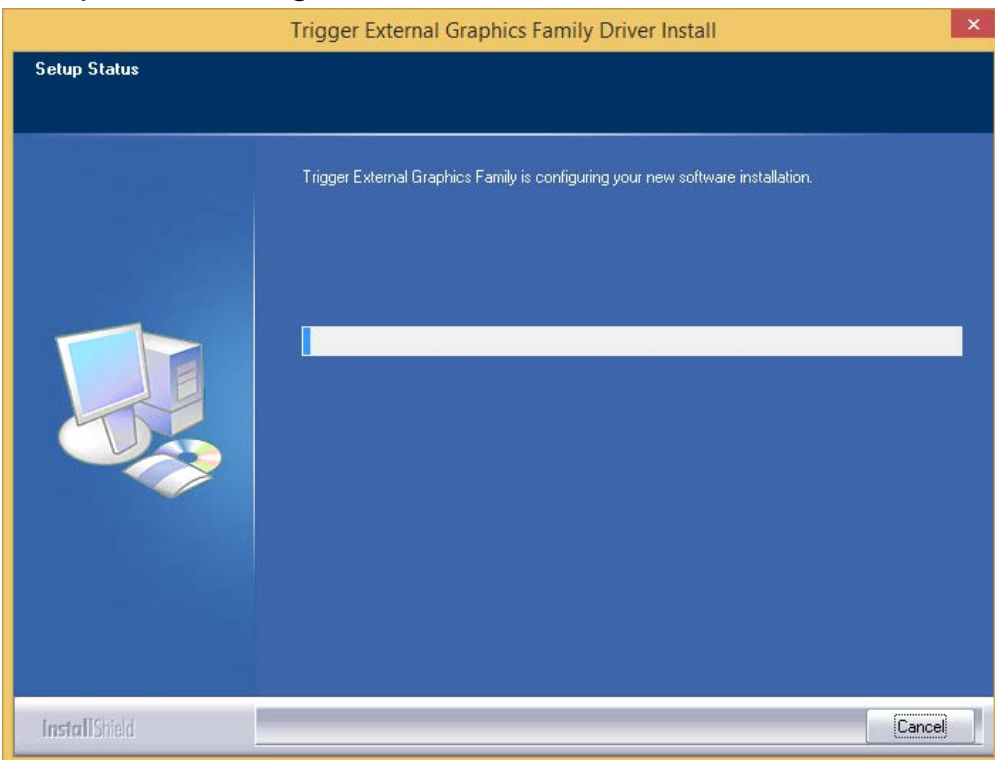
Step 3.

License Agreement; please review it and check **“I accept the terms of the license agreement.”** Click **“Next”** to accept the License Agreement.



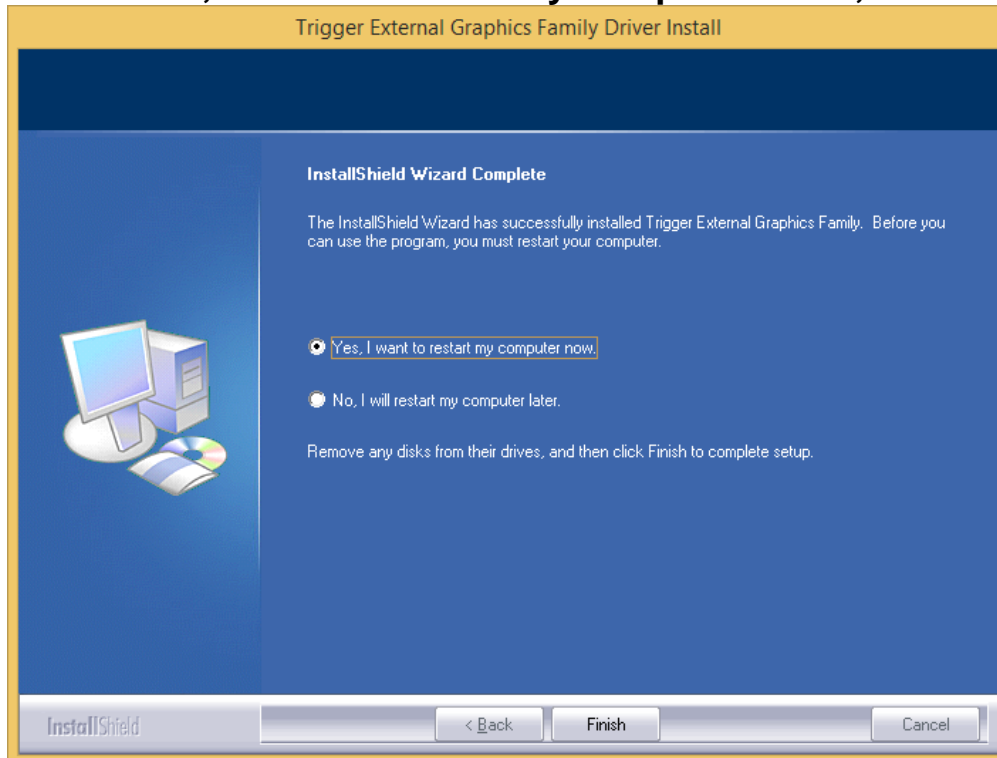
Step 4.

Setup is searching for installed features.....



Step 5.

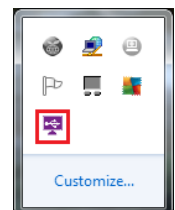
Select “**Yes, I want to restart my computer now**”, and click “**Finish**” to reboot.

**Step 6. HARDWARE DEVICE DRIVER INSTALLATION (AFTER REBOOT)**

Please connect the external display device (monitor/projector) to the VGA/DVI/HDMI connector of **USB 2.0 DISPLAY ADAPTER** and turn on this external display device.

Then plug the **USB 2.0 DISPLAY ADAPTER** into an available USB port of your PC or Notebook. The device driver software setup will begin automatically.

After the driver is configured, you will see there an UI icon “USB Display (Trigger) Utility” on the taskbar. The extended display will be shown on the attached display device. You may begin to use the USB 2.0 DISPLAY ADAPTER with your display device.

**Step 7. INSTALLATION OF MULTIPLE USB 2.0 DISPLAY ADAPTERS**


Please plug in the additional USB 2.0 DISPLAY ADAPTER (connected with the external display device already) to an available USB port of your computer (host PC), the device driver will be configured automatically. After the driver is configured completely, the USB extended display will be shown on the attached display device.

Repeat this step for each additional USB 2.0 DISPLAY ADAPTERs you want to install. All USB Display devices are now installed completely and ready to use.

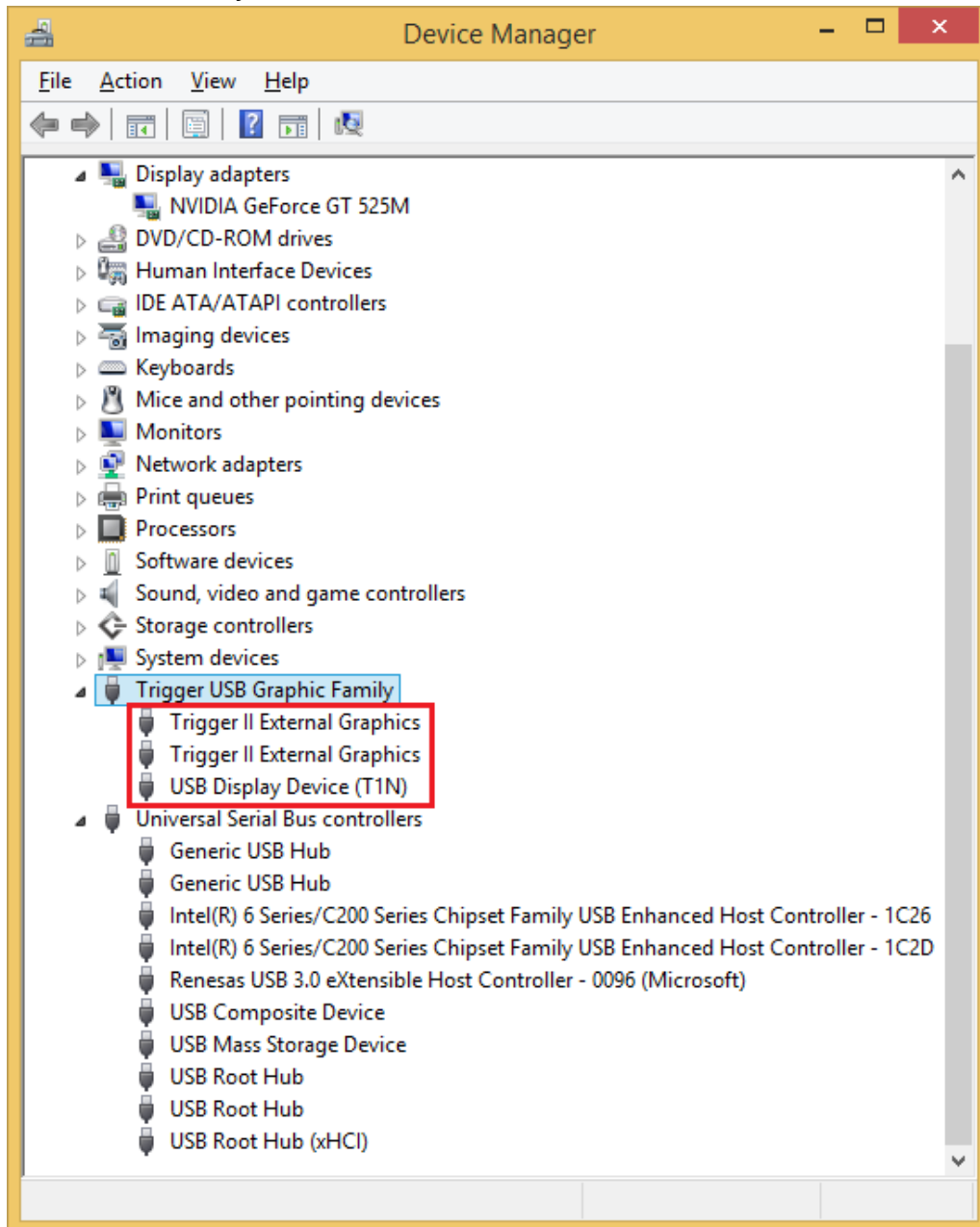
※ The “USB Display (Trigger) Utility” icon appeared when the USB Display Adapter connected to the USB host.

VERIFYING DEVICE DRIVER INSTALLATION (WINDOWS 8.1)

The following procedure allows you to verify the device driver installation.

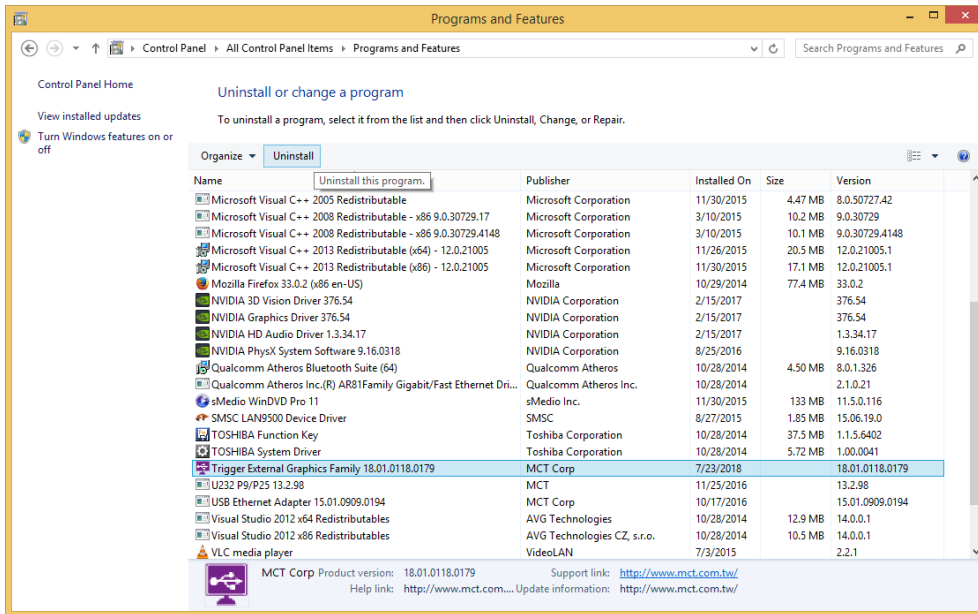
Swipe in from the right edge of the screen, and then click “**Search**” → enter “**Device Manager**”. (Right click “Start ” at the taskbar, click “Device Manager”)

Plug-in the **USB 2.0 DISPLAY ADAPTER**, then double click “**Trigger USB Graphics Family**”. Begin verification by make sure highlighted devices were added to the system.

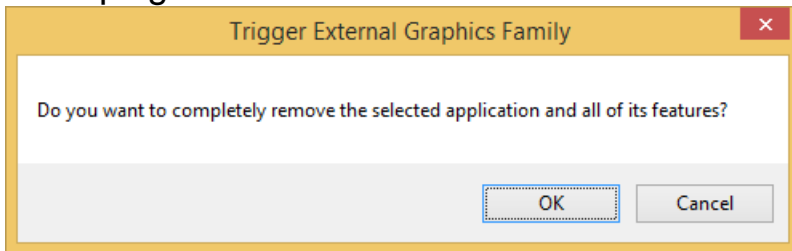


DEVICE DRIVER UN-INSTALLATION

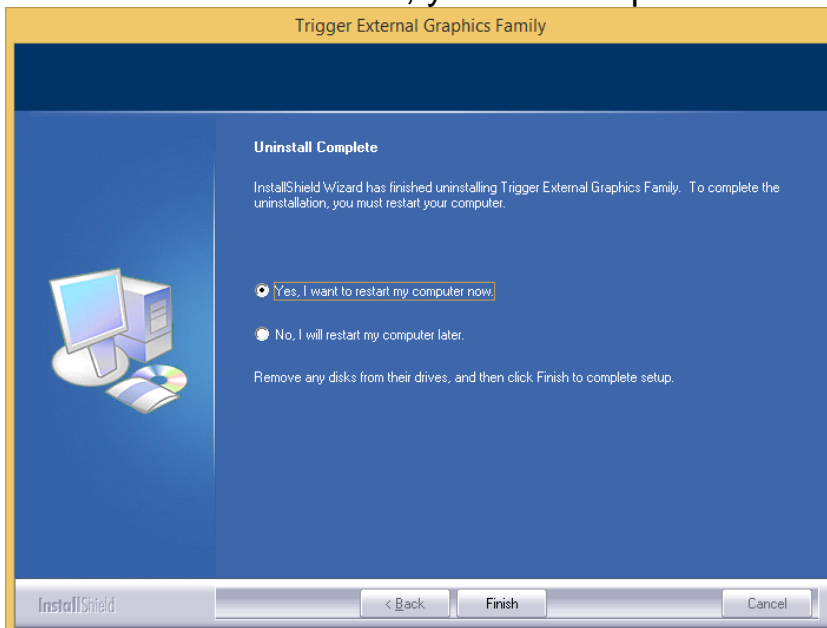
1. Right click **“Start”** at the taskbar, then click **→”Programs and Features”**.
 Select **“Trigger External Graphics Family 18.xx.xxxx.0179”**.
 Click **“Uninstall”** button.



2. Unplug the **USB 2.0 DISPLAY ADAPTER** and click **“OK”** to continue.




3. Select **“Yes, I want to restart my computer now”** and click **“Finish”** to reboot. After reboot, you will complete the driver un-installation.



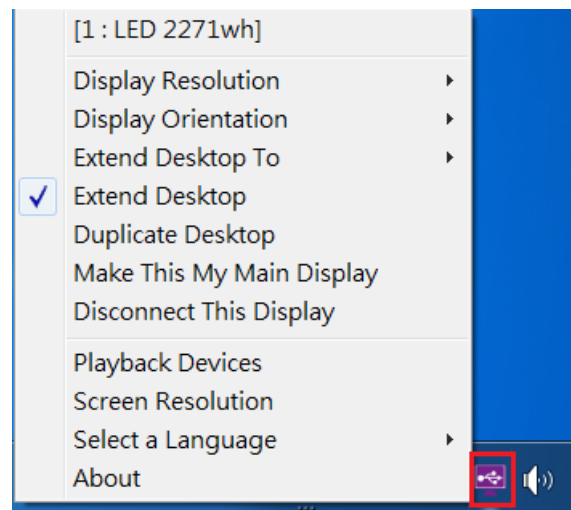
FUNCTION DESCRIPTION

This section describes several friendly functions provided by the **USB DISPLAY ADAPTER** designed to ease your single or multiple USB display experience on Windows 7, Windows 8 and Windows 8.1 (not for Windows 10 or newer). A display device described in this section means devices such as monitor and projector.

ACCESS USB DISPLAY UTILITY (WINDOWS 7/ 8/ 8.1 ONLY)

Make sure the USB Display Adapter is attached to the PC, and will see an icon “USB Display (Trigger) Utility ” in the taskbar.

Click this icon to access the variety of functions associated to the USB Display adapter.



USB Display (Trigger) Utility

- It won't be shown on the taskbar if the USB Display Adapter does not connect to the USB port of your PC.

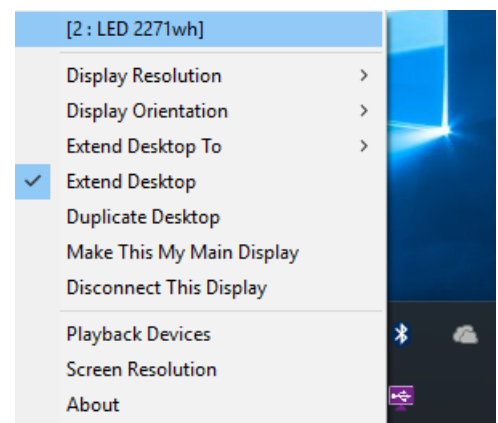
DISPLAY ID

- Smart Display Device ID Detection

USB Display Adapter supports VESA defined DDC/EDID. The utility will show the **display device ID** whenever it is attached to the USB Display Adapter.

If there is no display device attached to the USB Display Adapter, a “**Generic**” ID will be shown.

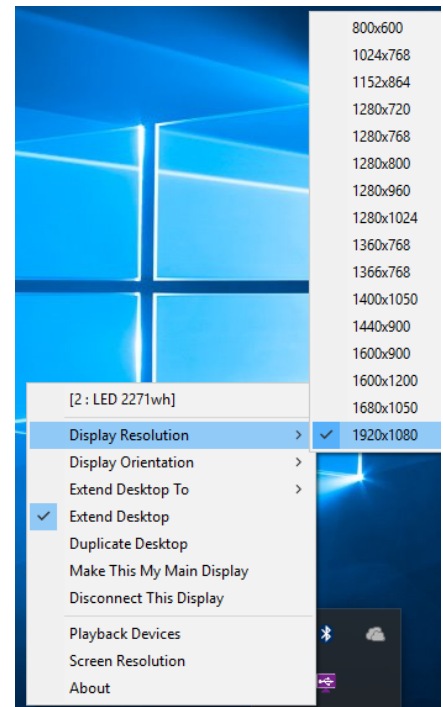
In some cases, the attached display device does not support EDID, the ID will also defined as “**Generic**”.



DISPLAY RESOLUTION

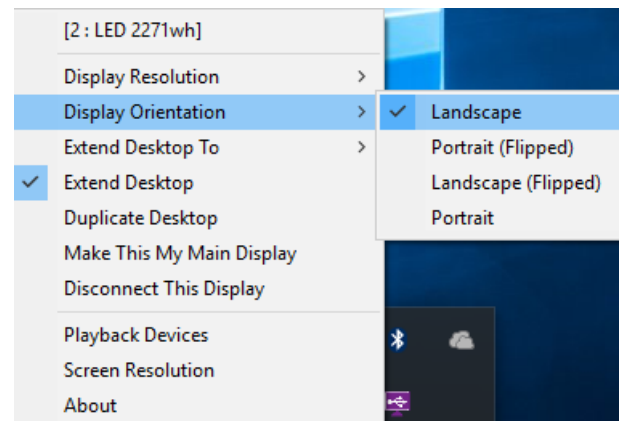
- Fast Access to Display Resolution Setting

The resolution list will show up when you move the cursor over “Display Resolution”. Select and click the resolution you want.



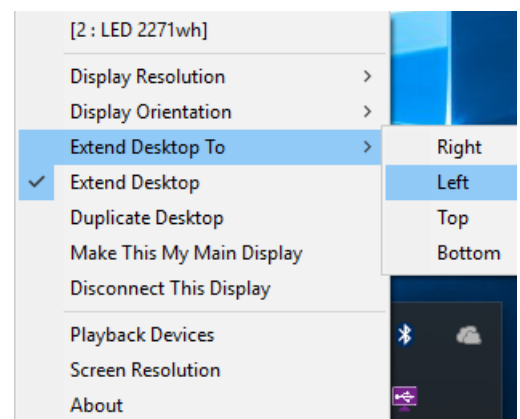
DISPLAY ORIENTATION

There are four options available: “Landscape”, “Portrait (Flipped)”, “Landscape (Flipped)”, and “Portrait” that under the extended or primary display mode.



EXTENDED DESKTOP TO

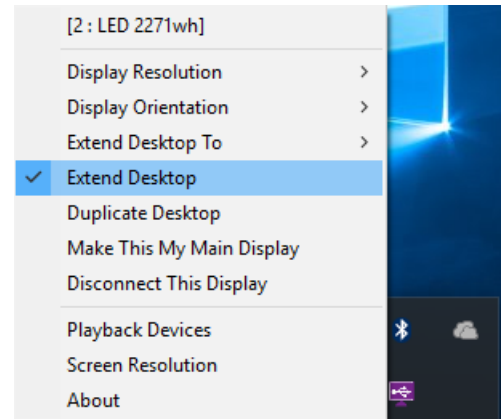
To adjust the position of extended display to be “Right”, “Left”, “Top”, or “Bottom”.



DISPLAY MODE

◆ “EXTEND DESKTOP” (DEFAULT)

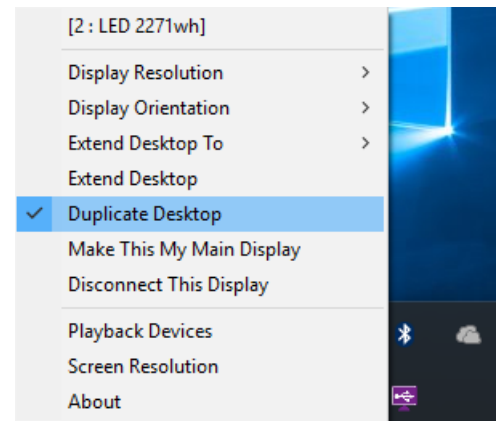
A default display mode, this feature allows the attached USB Display enable display device to work as “Extended” display of the on-board screen.



◆ “DUPLICATE DESKTOP”

This feature allows the same contents of on-board screen to be displayed (mirroring) to the USB Display enabled display device. For example, the on-board screen’s resolution is 1024x768x32bit, and the USB Display enabled device will set as the same resolution.

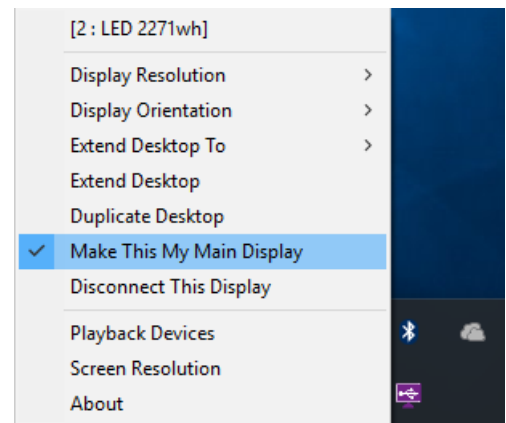
Be note when “Duplicate Desktop” is selected, the function of “Display Orientation” will be disabled automatically.



◆ “MAKE THIS MY MAIN DISPLAY”

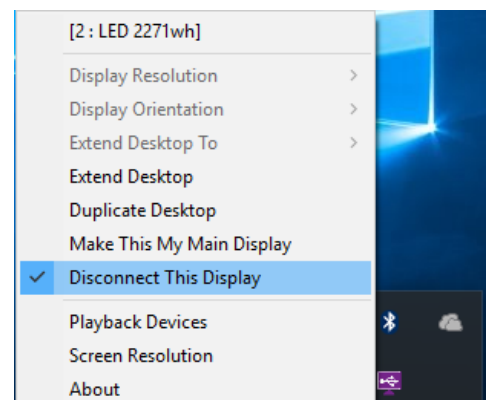
This feature allows USB Display enabled device to act as the main display. The on-board screen will work as the extended display.

Please be advised that some display utility and drivers that shipped with certain AGP and built-in display adapters may prevent this option from working on some Windows XP systems. You may disable the other utility program (usually found in the same taskbar located on the bottom right corner) to make this function work properly.



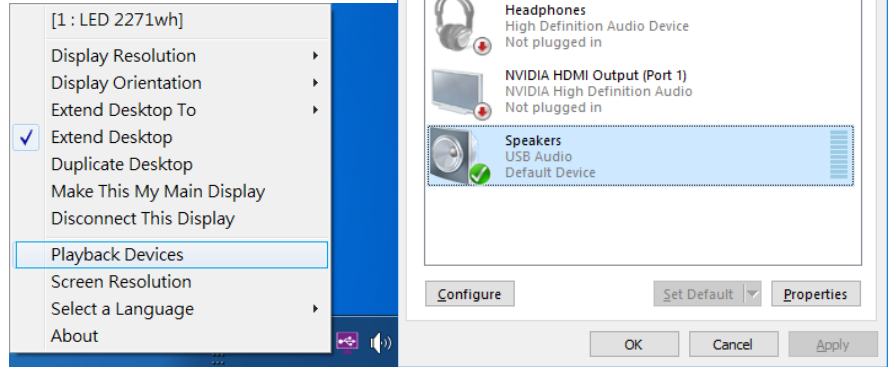
◆ “DISCONNECT THIS DISPLAY”

This option disables the video output from the USB Display Adapter.



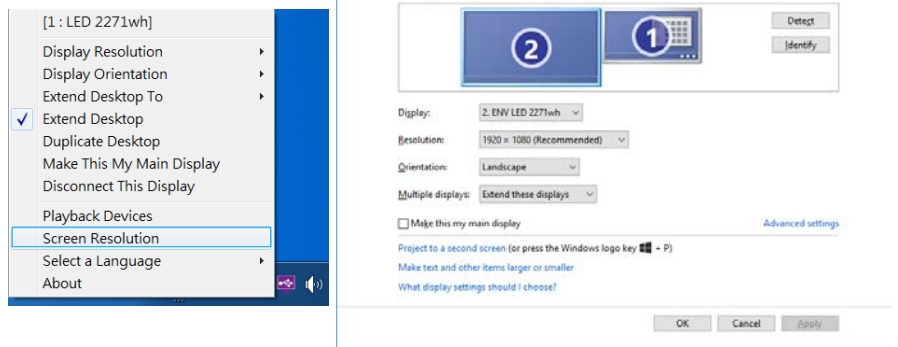
◆ **“PLAY BACK DEVICE”**

Fast open to the system **“Sound”**.
The USB Audio is the default audio output when connects with USB HDMI Display Adapter.



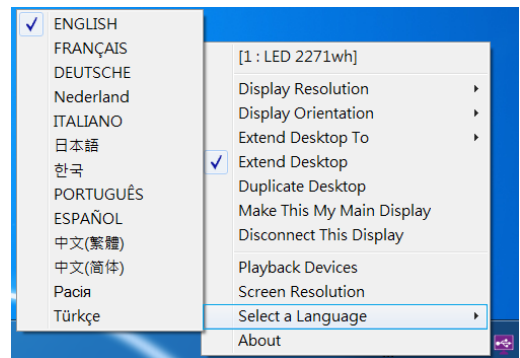
◆ **“SCREEN RESOLUTION”**

Fast access to the **“Screen Resolution”**.



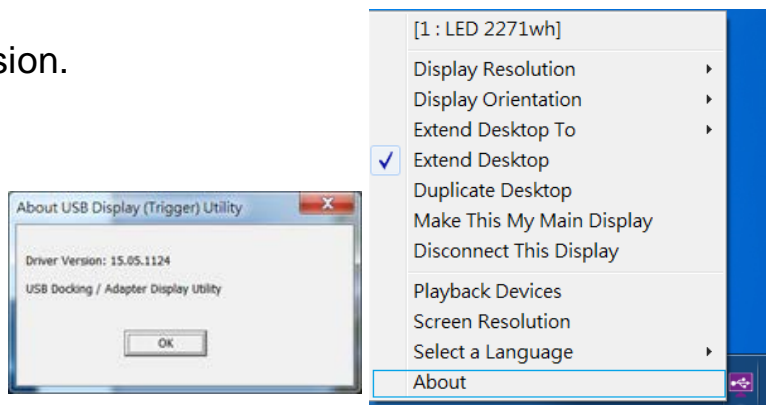
◆ **“SELECT LANGUAGE”**

Fast access to select a language.




◆ **“ABOUT”**

To check the current driver version.



Q&A

This section describes the common Q&A regarding to the installation or operation of the USB 2.0 DISPLAY ADAPTER.

Q: Why the icon “USB Display (Trigger) Utility ” did not show on the taskbar.

A: We has modified the driver architecture to allow full support for the users running Microsoft Windows 10 Anniversary Update or newer. MCT “USB Display (Trigger) Utility” icon will not be present on the system tray (taskbar) on Windows 10 or newer.

Q: Why can't I make the USB 2.0 DISPLAY ADAPTER the primary display?

A: Some video cards ship their product with a utility that prevent other video cards from being set as the primary card. Check the bottom right hand corner taskbar for the utility. Disable the utility before switching our adapter to be the primary display.

Q: Why won't my DVD player work when I move it over to the extended display?

A: Some DVD playback software packages do not support playing on a second display adapter of any kind. You may try to open the program in the secondary display first before playing the DVD.

Q: Why does my mouse not move pass the right side of the screen as it should on extended desktop?

A: Check the display settings and make sure that your display number '2' is on the right side of display number '1'. You can rearrange how Windows treats each display in relation to each other in the Display Properties Settings.

Q: There are lines running horizontally up and down my screen.

A: This is due to a low refresh rate setting. You can change this in the Display Properties Settings Advanced Monitor. Make sure you select the USB 2.0 DISPLAY ADAPTER first and not set the refresh rate higher than what your monitor can support. This may damage your monitor. You can also try to reset/refresh/resynchronize your monitor.

Q: Direct3D does not work?

A: This is a limitation of the adapter on Windows XP/ Windows Vista.

TROUBLESHOOTING TIPS

This section describes the general troubleshooting tips regarding to the installation or operation of the USB DISPLAY DEVICE.

Known Issues

- MCT has changed the driver architecture to fully support Windows 10 Anniversary Update or newer. It automatically detects and installs the required driver once connected to the USB port on the host port of your computer.
- There is **no** “USB Display (Trigger) Utility” icon appeared on Windows 10 Anniversary Update or newer.
- It is prohibited to install the other USB to Graphics drivers (example: DisplayLink software) at the same Windows XP/Vista/7/ 8/ 8.1 except for Windows 10 Anniversary or newer.
- Graphics card drivers are up to date.
- Direct 3D is not supported under Windows XP/Vista (supports the XPDM/IDD).
- Do not support Standard VGA graphics Adapter / Windows RT (Arm) platforms.
- It may be no problem to install on Windows Server 2008/ 2008 R2/ 2012/ 2012 R2/ 2016, however MCT does not test or support these platforms.

General Recommendation

- Check to make sure that the device is plugged in correctly to the host system.
- Unplug the USB cable of USB graphics device and re-insert it.
- Check to see that the monitor is connected correctly and is powered ON.
- Make sure to restart your computer after the driver installation.
- Try a different USB port and/or computer.
- Unplug all other USB devices from the system.
- Try connecting the USB cable of USB graphics device to the computer directly (not via the USB Hub).
- Reset/refresh/resynchronize your monitor.

Media Playback

- During video playback on all platforms, please do not change the display mode, position or arrangement of video player window (such as dragging the video player window between main display and attached display). This usually causes the video player to have strange behavior and the video may stop playing. We suggest stopping the video playback, moving the window to the USB graphics device attached display and then selecting the video clip to start playing.
- Downsizing your screen landscape lower than 50% will help smooth out jerky video playback for video running in full screen model.
- You may experience poor video performance on USB graphics device attached display under some low-spec PC system.
- Video rendering using hardware overlays is supported.
- Some DVD playback software packages do not support playing on a second display adapter

of any kind. You may try to open the media player in the secondary display first before start playing the DVD.

- Your PC may be lack of certain video codec to support playback of certain video format. Please use the link below to install license free media codec.

K- Lite: http://www.free-codecs.com/download/K_Lite_Codec_Pack.htm

- Video/Media players have different decoding capability under different display modes. For better performance on watching DVD or certain video format on the USB graphics device attached display, it is recommended to use the following license free software.
- **Windows Media Player 10 or above**
- **Media Player Classic:** <http://sourceforge.net/projects/guliverkli/>

Others

- Some graphics card, i.e. Intel, prevents other secondary graphics chipset from being set as the primary card. As the result of this, **Primary mode** might not work or the display maybe disabled.
- If you have problems during the boot up process, start your computer in Safe Mode and uninstall the driver. Hold the CTRL key until the Windows startup menu appears and select Safe Mode.
- Please contact your dealer to obtain the latest driver or for additional assistance if needed.

REGULATORY COMPLIANCE

FCC

This equipment has been tested and found to comply with CISPR PUB. 22, FCC PART 15 SUBPART B & Canada Standard ICES-003 Issue 6.

Operation is subject to the following two conditions:

- This device may not cause harmful interference
- This device must accept any interference, including interference that may cause undesired operation of the device.

CE

This equipment is in compliance with the requirements of the following regulations:

EN 55032 : 2012/AC:2013 Class B

EN 55022 : 2010/ AC: 2011, Class B

EN 61000-3-2 : 2014, EN 61000-3-3 : 2013 and EN 55024 : 2010

(IEC 61000-4-2 Edition 2.0 2008-12, IEC 61000-4-3 Edition 3.2 2010-04,

IEC 61000-4-4 Edition 3.0 2012-04, IEC 61000-4-5 Edition 3.0 2014-05,

IEC 61000-4-6 Edition 4.0 2013-10, IEC 61000-4-8 Edition 2.0 2009-09

IEC 61000-4-11 Edition 2.0 2004-03)

RCM

This equipment is in compliance with the requirements of the following regulations:

AS / NZS CISPR 32:2013 Class B

VCCI

This equipment is in compliance with the requirements of the following regulations:

V-3/2015.04, Class B ITE

Disclaimer

Information in this document is subject to change without notice. The manufacturer does not make any representations or warranties (implied or otherwise) regarding the accuracy and completeness of this document and shall in no event be liable for any loss of profit or any commercial damage, including but not limited to special, incidental, consequential, or other damage. No part of this document may be reproduced or transmitted in any form by any means, electronic or mechanical, including photocopying, recording or information recording and retrieval systems without the express written permission of the manufacturer.